

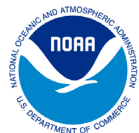
New York

SEAFOOD

Summit

2026

Welcome!



# Welcome to the 2026 NY Seafood Summit

Initiated in 2016 as a means of engaging and facilitating discussions among seafood professionals throughout New York.

Support Future Summit Activities, Donate Today!



Learn more online at [www.nyseagrant.org/seafoodsummit](http://www.nyseagrant.org/seafoodsummit)

# New York **SEAFOOD** Summit



## Sea Grant Apparel

Proceeds from sales of NY Sea Grant aquatic foods apparel support future Seafood Summit events.

Scan to pay!



**Get yours  
today!**

Crewneck - \$45



Don't forget to sign in for your chance to win!

Complete the post-event evaluation for another chance to win!

# New York **SEAFOOD** Summit



## Sea Grant Apparel

Proceeds from sales of NY Sea Grant aquatic foods apparel support future Seafood Summit events.

Scan to pay!



Get yours  
today!

Buff Neck Gear - \$23



Don't forget to  
sign in for your  
chance to win!

Complete the  
post-event  
evaluation for  
another chance  
to win!

# Seafood Summit Planning Team



Michael Ciaramella  
New York Sea Grant



Barry Udelson  
New York Sea Grant



Kristin Gerbino  
CCE Suffolk County



Tara McClintock  
CCE Suffolk County



Scott Curatolo-Wagemann  
CCE Suffolk County



Stacy Furgal  
New York Sea Grant



Stephen Frattini  
Center for Aquatic Animal  
Research and Management



Bruce Mattel  
Culinary Institute of  
America



# New York Sea Grant

50 Years of Research,  
Extension and Education.  
“Bringing Science to the  
Shore.”



[www.nyseagrant.org](http://www.nyseagrant.org)


# New York Sea Grant Updates

- Seaweed Food Safety Resources
  - [www.nyseagrant.org/seaweed](http://www.nyseagrant.org/seaweed)
- Seafood and Aquaculture Office Hours |
  - April 2, 2026
  - [www.nyseagrant.org/seafoodandaquacultureofficehours](http://www.nyseagrant.org/seafoodandaquacultureofficehours)
- Aquatic Foods Conference | May 20<sup>th</sup> in Long Beach
  - [aquaticfoodsconference.com](http://aquaticfoodsconference.com)



# NY Sea Grant Food Safety Trainings

- Seafood HACCP Trainings – April 28<sup>th</sup> | \*August 11<sup>th</sup> | December 8<sup>th</sup>
  - [www.nyseagrant.org/seafood](http://www.nyseagrant.org/seafood)
- Traceability Training and Resources
- Sanitation Control Procedures Training



**Sea Grant NEW YORK**

**SEAFOOD HACCP Training Program**

Register Online at: [www.nyseagrant.org/seafood](http://www.nyseagrant.org/seafood)

### 2026 Training Schedule

**Segmented Training**

**Segment One (\$175)**  
Participants must first enroll in and complete the self-paced online course managed by New York Sea Grant. This course takes approximately 8-12 hours and participants have 6 months to complete the course once enrolled. Participants can enroll at any time at [seafoodhaccp.cornell.edu](http://seafoodhaccp.cornell.edu).

**Segment Two (\$75 for NY, \$150 out of State)**  
Segment two trainings are live trainings (virtual or in-person) and must be completed within 9 months of completing segment one. Virtual trainings run from 8:30 AM EST to 5:00 PM EST. In-person trainings typically run from 9:00 AM to 5:00 PM.

Participants who successfully complete the segment two or basic trainings will receive a Nationally recognized training certificate from the Seafood HACCP Alliance and Association of Food and Drug Officials.

**Basic Training**

**Basic HACCP (Price Varies)**  
Basic seafood HACCP trainings are 2.5+ days with a minimum of 16.5 contact hours of live training that can be conducted virtually or in-person. Days and times will vary by training and delivery method.

**Segment Two Trainings**

- Tuesday, April 28, 2026  
Virtual Zoom
- Tuesday, August 11, 2026  
Stony Brook University, Stony Brook, NY
- Tuesday, December 8, 2026  
Virtual Zoom

**Basic Trainings**

Contact Dr. Michael Ciaramella at [mc2544@cornell.edu](mailto:mc2544@cornell.edu) for more information and to request basic Seafood HACCP training.



# Cornell Cooperative Extension Suffolk County



**Choose  
Local  
F.I.S.H**

**Fresh. Indigenous. Sustainable. Healthy**  
*An Initiative of Cornell Cooperative Extension Marine Program*





Cornell Cooperative Extension of Suffolk County- Marine Program- Fisheries Department

Cornell Cooperative Extension  
Suffolk County

cornell cooperative extension

MARINE PROGRAM



March 27, 2026

# Cornell University Cooperative Extension Marine Program Fisheries Division



Scott  
Curatolo-Wagemann



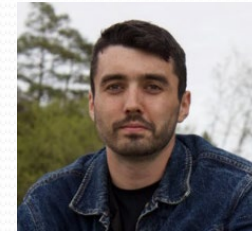
Emerson  
Hasbrouck Jr.



Tara  
McClintock



Kristin  
Gerbino



Alex  
Mercado



Tyler  
Guterres



Mike  
Bowen



Denise  
Kaminski



Amanda  
Dauman



Illusion  
Rivera



# CCE Marine Fisheries Program Overview



- The fisheries department is part of the CCE Suffolk Marine Program, which also covers shellfish restoration, habitat restoration, water quality, youth education, and citizen science.
- CCE Fisheries has a 40-year history of working cooperatively with the fishing industry.
- Established good working relationships with a large number of industry members.
- We have conducted over 45 cooperative research projects. Projects have a Suffolk County focus, but engagement with industry and fisheries issues takes us from Maine to North Carolina.
- Since 2022, CCE Fisheries has been engaged with 11-12 projects at any given time.



# Project Development

## SEEK IDEAS AND DISCOVER ISSUES FROM THE INDUSTRY



- Fishermen help determine which projects are proposed and conducted – it all starts with the fishing industry.
- The industry generates ideas for projects and asks questions that spur research. Fishermen help to solve fishermen's problems.
- Researchers link available funding opportunities with industry and cooperative research needs.

# Project Development Cont.

## INCORPORATE FISHERMEN IN THE PLANNING PROCESS

- Fishermen help to develop the project plan of work.
- **Listen** to fishermen - they are out there every day and see what is going on. They have a **wealth** of knowledge.
- At-sea projects - accept that you are trying to conduct a “controlled” experiment under nearly uncontrollable conditions. Control what you can and randomize variables to the extent that you can.



# Range of Cooperative Research Projects

Recreational Fishing Projects

Conservation Gear Technology

Bycatch Avoidance Networks/Electronic Reporting

Marine Debris Removal

Offshore Wind

Local Sustainable Seafood Market Development



# CCE Marine Fisheries



Cornell Cooperative Extension  
*of Suffolk County*

<http://ccesuffolk.org/marine/fisheries>

423 Griffing Avenue, Suite 100  
Riverhead, New York 11901  
(631) 727-7850





# Explore the Long Island Seafood Cuisine Trail!



Cornell Cooperative Extension  
Suffolk County



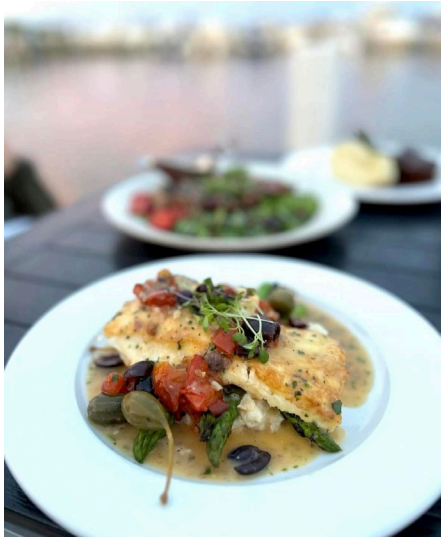
Cornell Cooperative Extension  
Marine Program





# The Long Island Seafood Cuisine Trail

- CCE, in collaboration with NYS Dept of Agriculture & Markets, developed 2 Seafood Cuisine Trails to drive business and tourism to locations proudly serving and selling locally-harvested fish and shellfish.
- The Trails are part of the state's Blue Food Transformation Initiative and were created to reinvigorate NY's seafood industries and strengthen the local food system.
- Long Island's waters are abundant with fresh, delicious fish and shellfish, and our fishermen and oyster growers work bravely and tirelessly harvesting these local delicacies so let's support and celebrate them!



- The South Trail runs along NY-27 from Bay Shore to Montauk and includes 20 restaurants and fish markets selected for their elevated commitment to choosing local seafood.
- The North trail, which will run from Northport to Greenport, is under development. The official launch is scheduled for Spring 2026!

# LI Seafood Cuisine Trail App

- The Seafood Trail App guides customers to restaurants and fish markets where they can enjoy a fine dining experience, pick up a variety of local oysters for a tasting, take-out a quick seafood lunch, or grab some fillet to prepare a fish dinner at home.
- Follow the trail to locations that are known to appreciate and celebrate the bounty of our waters while boosting business and supporting Long Island's fishing communities!



[www.localfish.org/seafood-trail](http://www.localfish.org/seafood-trail)

# Agenda

- Association Updates
- Agency Updates: AGM and DEC
- Legislative Updates and Introductions
- Working Waterfronts Panel
- Resource Expo and Tastings

## Sponsors

---



# Long Island Association Updates

## Long Island Commercial Fishing Association

Bonnie Brady, Executive Director

## Long Island Oyster Growers Association

Eric Koepele, President







# Oyster Dregs Hunt & Beach Clean Up



## April 4

Help us clean up 10 - 1

Beer and Oysters on LIOGA 3 - 5

[www.liogany.org/peconic-oyster-dregs-hunt](http://www.liogany.org/peconic-oyster-dregs-hunt)



RAMS HEAD  
INN



Help us pick up oyster gear and winter debris from Peconic shorelines in the morning and join us for beer and oysters at Greenport Brewery (both locations), Ram's Head Inn or Kidd Squid in the afternoon

Follow the QR code to sign up and we'll send you a note with a shoreline near you that needs attention or stop by Greeport Brewery Peconic, Rams Head or Kidd Squid Saturday morning 9 - 11AM for beach assignment



# Agency Updates

## NYS Department of Agriculture and Markets,

Joshua Perry, Seafood Coordinator, Division of Agriculture  
Development

## NYS Department of Environmental Conservation

Marty Gary, Director, Division of Marine Resources





Department of  
Agriculture and Markets

# Seafood Program Updates and Funding Opportunities

Joshua Perry, Seafood Coordinator  
New York Seafood Summit – Downstate Summit

MARCH 27, 2026

- The position was created following the recommendations of the NYS Seafood Interagency Workgroup 2024 Report.
- Serve as a non-regulatory liaison between the State and both commercial aquaculture and commercial fishing industries, supporting coordination across agencies, partners, and seafood industry stakeholders.
- Supports the Governor’s initiative to expand seafood procurement opportunities across state institutions and strengthen New York’s seafood economy.



# Seafood Cuisine Trail

- Launched in March 2025, the Seafood Cuisine Trail highlights and promotes restaurants and markets serving locally raised and wild-caught seafood from Long Island.
- Developed by the Cornell Cooperative Extension of Suffolk County Marine Program in collaboration with the New York State Department of Agriculture and Markets.
- Trail currently features a South Shore segment from Bayshore to Montauk, with a North Shore segment from Oyster Bay to Greenport in development.
- To enhance accessibility, the trail can be explored through a website and mobile app.



## Long Island Aquaculture Infrastructure Grant

- The Long Island Aquaculture Infrastructure grant program offers funding and support to aquaculture operations on Long Island. The program provides two rounds of funding assistance, totaling approximately \$4.2 million.
- Round 1 provided \$1.2 million in funding assistance for aquaculture equipment on a rolling, first-served-basis. 17 small businesses awarded funding.
- Round 2, announced in October of 2025, will provide \$3 million to support infrastructure upgrades. The RFA period closed on January 5, 2026 with applications currently under internal review.



# The Long Island Seafood Processing Feasibility Study

- Developed by Cornell Cooperative Extension of Suffolk County Marine Program in collaboration with the New York State Department of Agriculture and Markets.
- The study examines opportunities to strengthen seafood processing, distribution, and working waterfront infrastructure on Long Island.
- Provides recommendations to support the recovery, growth, and long-term viability of the seafood sector.
- Following the release of the study, a multi-agency and partner group was convened to explore opportunities to advance several of the study's recommendations.



## Aquaculture and Wild-Caught Seafood Website

- The Department of Agriculture and Markets launched a new Aquaculture and Wild-Caught Seafood webpage within the Business Development tab on the Ag and Markets website.
- Designed as a centralized hub for industry and partner resources.
- Provides access to programs, funding opportunities, industry reports, and other regulatory and partner resources for the aquaculture and wild-caught seafood industries.



A fisherman in a blue jacket and yellow boots is working on a fishing net on a boat. The background shows the ocean and a clear blue sky. The text "Current Funding Opportunities" is overlaid in white.

# Current Funding Opportunities

## NYS Food and Fiber Processing Grant Program

- Administered by the Farm and Food Growth Fund; supports projects that expand or strengthen food processing capacity in New York State, including seafood processing.
- Eligible applicants: Operating food businesses, including seafood processors and aquaculture operations.
- Eligible uses include facility expansion, processing equipment, cold storage, packaging, and supply chain infrastructure.
- Awards: \$250,000 – \$2.5 million | Match: 50% | Deadline: April 28, 2026 (5:00 PM)



# NYS Agriculture and Food Systems Workforce Development Grant

- Administered by the New York State Department of Agriculture and Markets; supports workforce training programs across agriculture and food system industries, including aquaculture and seafood-related occupations.
- Eligible applicants: governmental entities, not-for-profit organizations, educational institutions, and related entities providing workforce training programs.
- Eligible activities include training programs, internships/apprenticeships, certifications, and workforce skill development.
- Awards: \$50,000 – \$500,000 | Match: 20% | Deadline: April 28, 2026 (3:00 PM)

## Website and Funding Opportunities Page



**Aquaculture and Wild-caught Seafood Webpage**



**Funding Opportunities Webpage**



**Joshua Perry**  
**Seafood Coordinator**

**[Joshua.Perry@agriculture.ny.gov](mailto:Joshua.Perry@agriculture.ny.gov)**

**(631) 263-1045**

# Elected Officials Updates

**Assemblywoman** Jodi Giglio

**Assemblyman** Tommy John Schiavoni

**Riverhead Town Supervisor** Jerry Halpin

**Suffolk County Executive** Ed Romaine



# Working Waterfronts Panel



Amanda Jones  
Inlet Seafood



Ann Welker  
Suffolk County  
Legislator



Sarah Lansdale  
Suffolk County  
Economic  
Development and  
Planning



Eric Koepele  
LIOGA





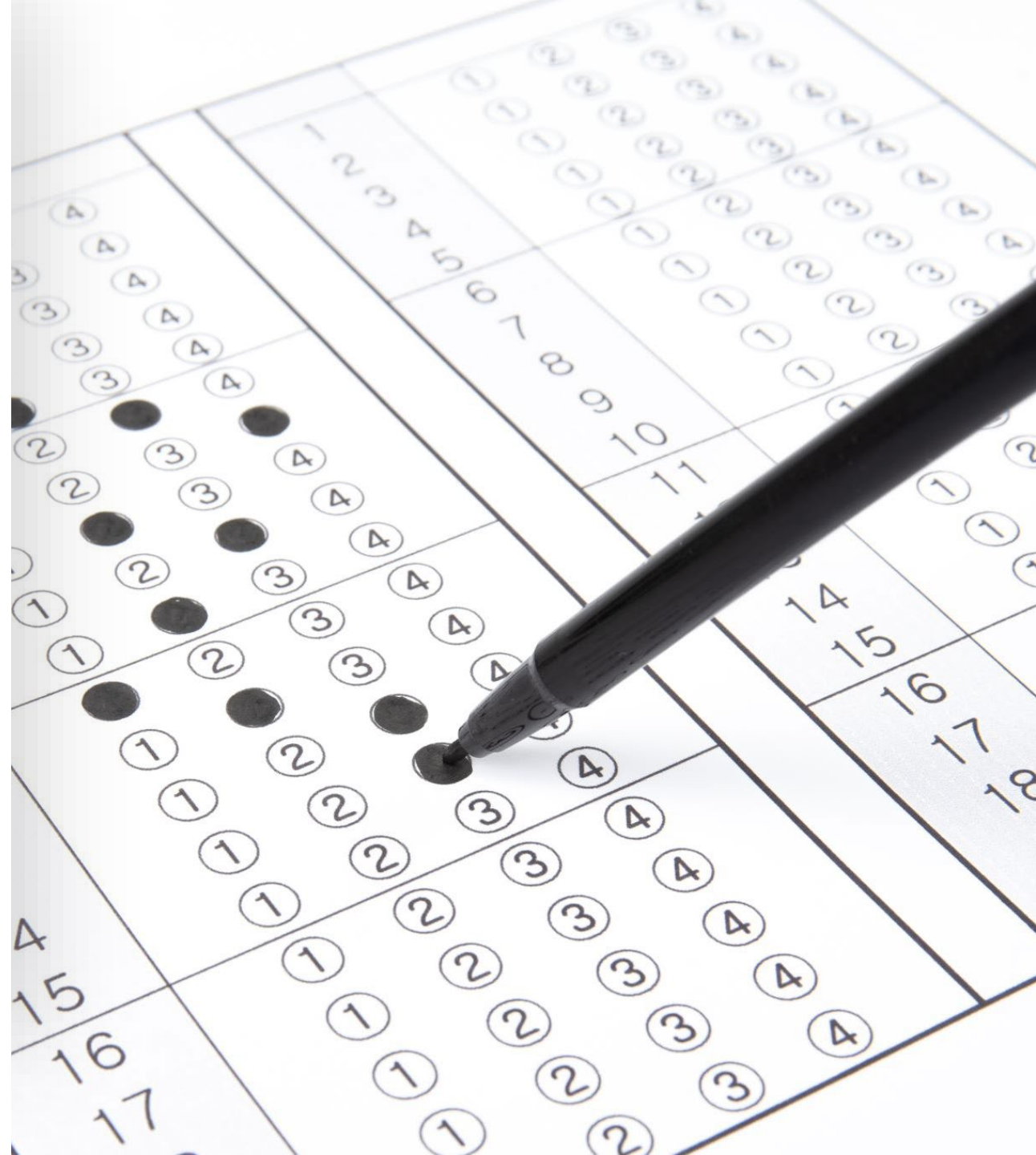
Suffolk County  
**Working Waterfront Program**  
2026

**Shinnecock Commercial Fishing Dock**  
*Photo Credit: Road K Productions*

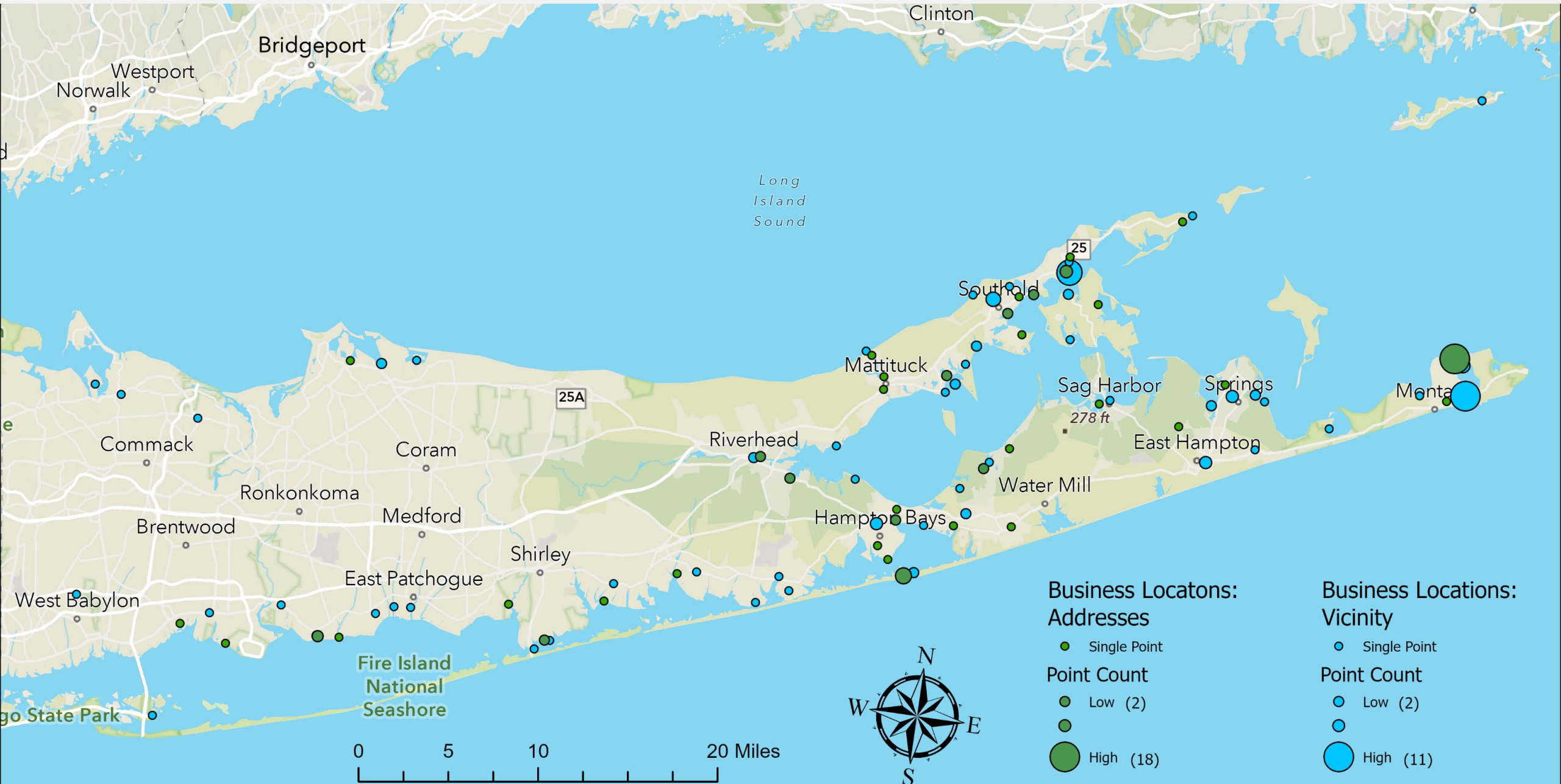


# Suffolk County Working Waterfront Survey Findings

- 164 respondents throughout the County
- Many types of businesses responded
- Majority of respondents in business for greater than 10 years
- Of the property owners, more than half have been approached to sell in the past 5 years



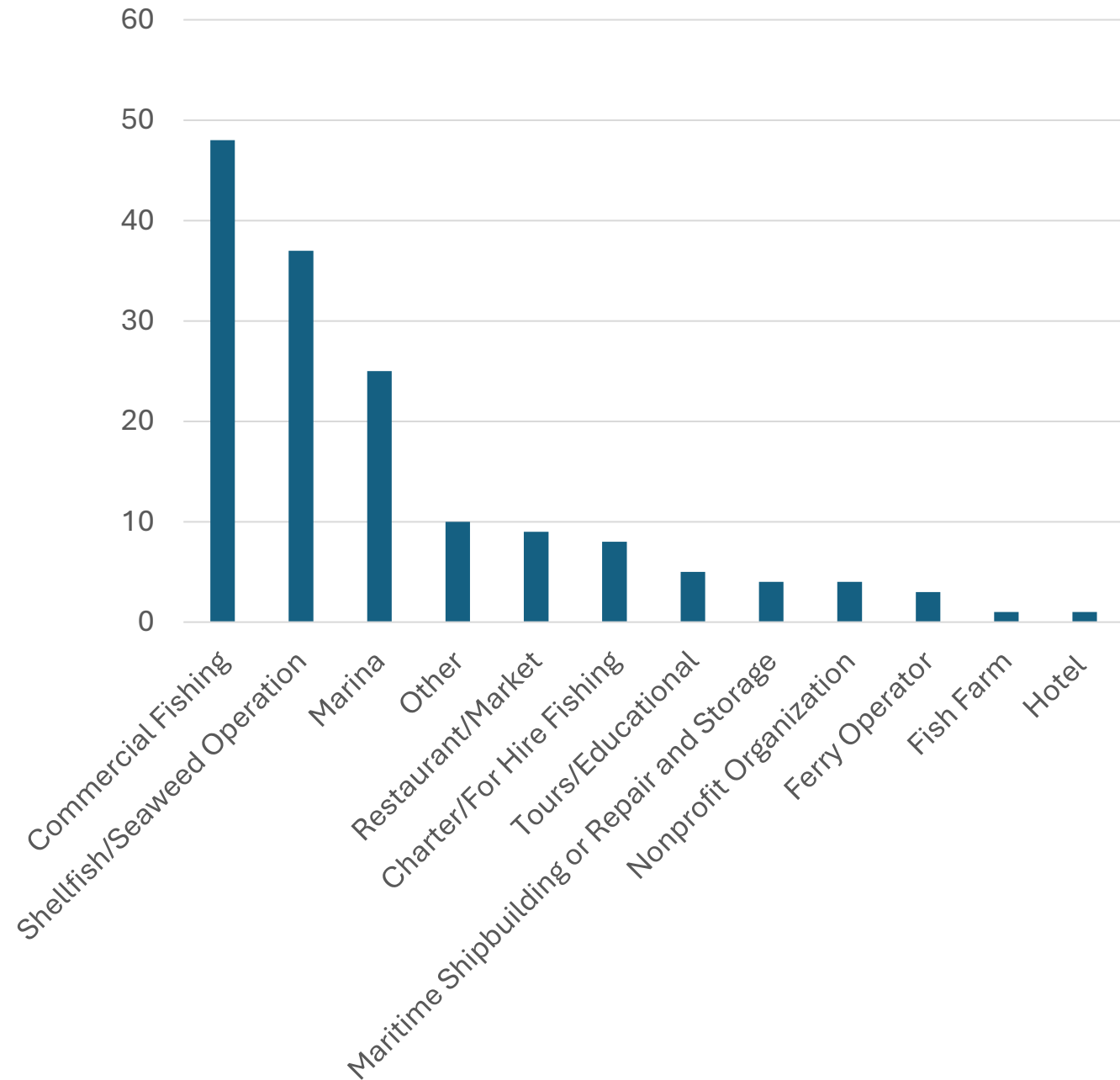
# Question 4: What specific body of water or site does your business launch from? (Overview)



## Question 5:

Please select your primary business type.

Primary Business Type	Count
Commercial Fishing	48
Shellfish/Seaweed Operation	37
Marina	25
Other	10
Restaurant/Market	9
Charter/For Hire Fishing	8
Tours/Educational	5
Maritime Shipbuilding or Repair and Storage	4
Nonprofit Organization	4
Ferry Operator	3
Fish Farm	1
Hotel	1

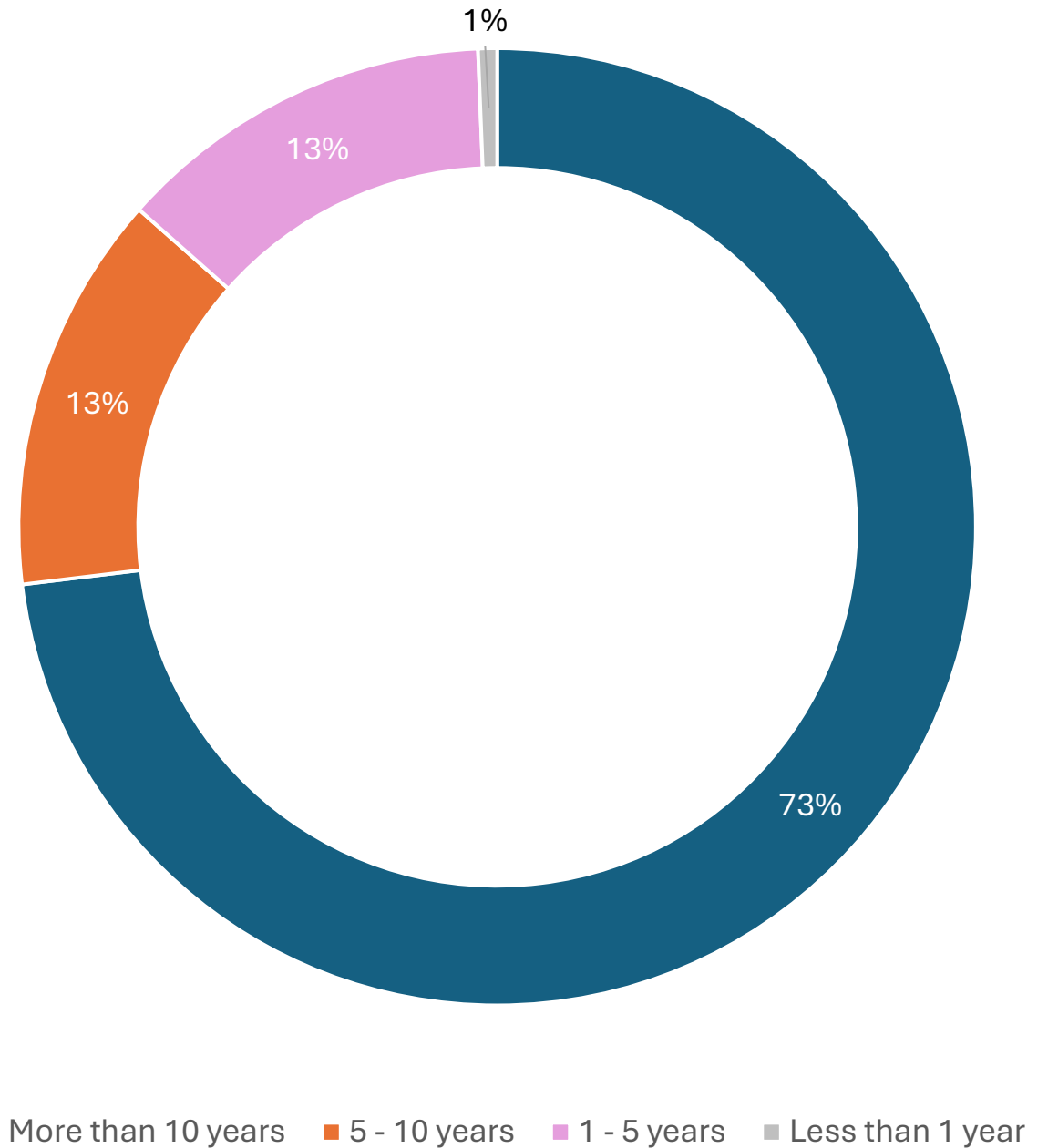


Open responses fitting existing categories were grouped. Other responses included marine contracting, marine rescue, pack out, wholesale, yacht club, marine consulting, surveying, legal and marine supply and instances where one business fit into multiple categories.

## Question 6:

For how many years have you been in operation?

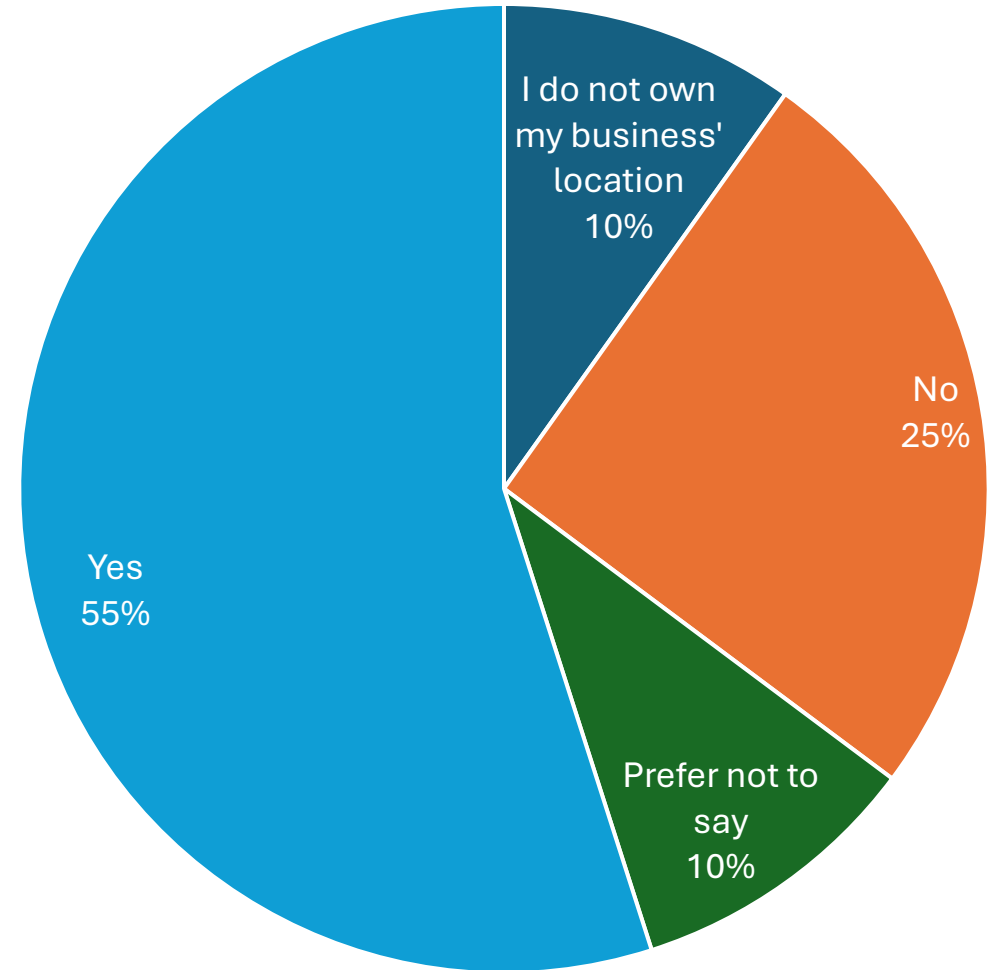
Years	Count
More than 10 years	114
5 - 10 years	21
1 - 5 years	20
Less than 1 year	1



## Question 24:

If you own your property, have you been approached about selling your property in the past 5 years?

	Count
I do not own my business' location	7
No	18
Prefer not to say	7
Yes	39



## Total Waterfront Commercial Property, Suffolk County, New York

Town	Waterfront Commercial Parcels	Waterfront Commercial Area
Babylon	355	138.42
Brookhaven	180	769.05
East Hampton	86	299.41
Huntington	22	179.01
Islip	88	274.23
Riverhead	40	196.24
Shelter Island	14	22.75
Smithtown	8	60.07
Southampton	95	233.48
Southold	76	232.01
<i>Suffolk County</i>	<b>964</b>	<b>2,404.65</b>

Source: 2016 Land Use, Suffolk County

## Suffolk County's Ocean Economy

<b>Sector</b>	<b>Establishments</b>	<b>Employment</b>	<b>Wages</b>	<b>GDP</b>
Marine Construction	66	697	\$63,770,148.00	\$114,048,743.79
Living Resources	95	540	\$22,716,410.00	\$56,177,940.46
Offshore Mineral Resources	21	25	\$1,756,718.00	\$2,977,712.45
Ship and Boat Building	(Suppressed)	(Suppressed)	(Suppressed)	(Suppressed)
Tourism and Recreation	2,666.86	33,746.47	\$1,060,858,331.80	\$2,323,808,087.40
Marine Transportation	91	3,411.00	\$330,576,002.00	\$505,612,898.31
<b>Ocean Economy</b>	<b>2,948.86</b>	<b>38,419.47</b>	<b>\$1,479,677,609.80</b>	<b>\$3,002,625,382.40</b>

Source: National Oceanic and Atmospheric Administration, Office for Coastal Management, Quick Report Tool for Socioeconomic Data. 2021 Data. Accessed 3/3/2025.

<https://coast.noaa.gov/quickreport/#/ENOW/ENOW//2013,2012,2011,2010,2009,2008,2007,2006,2005>



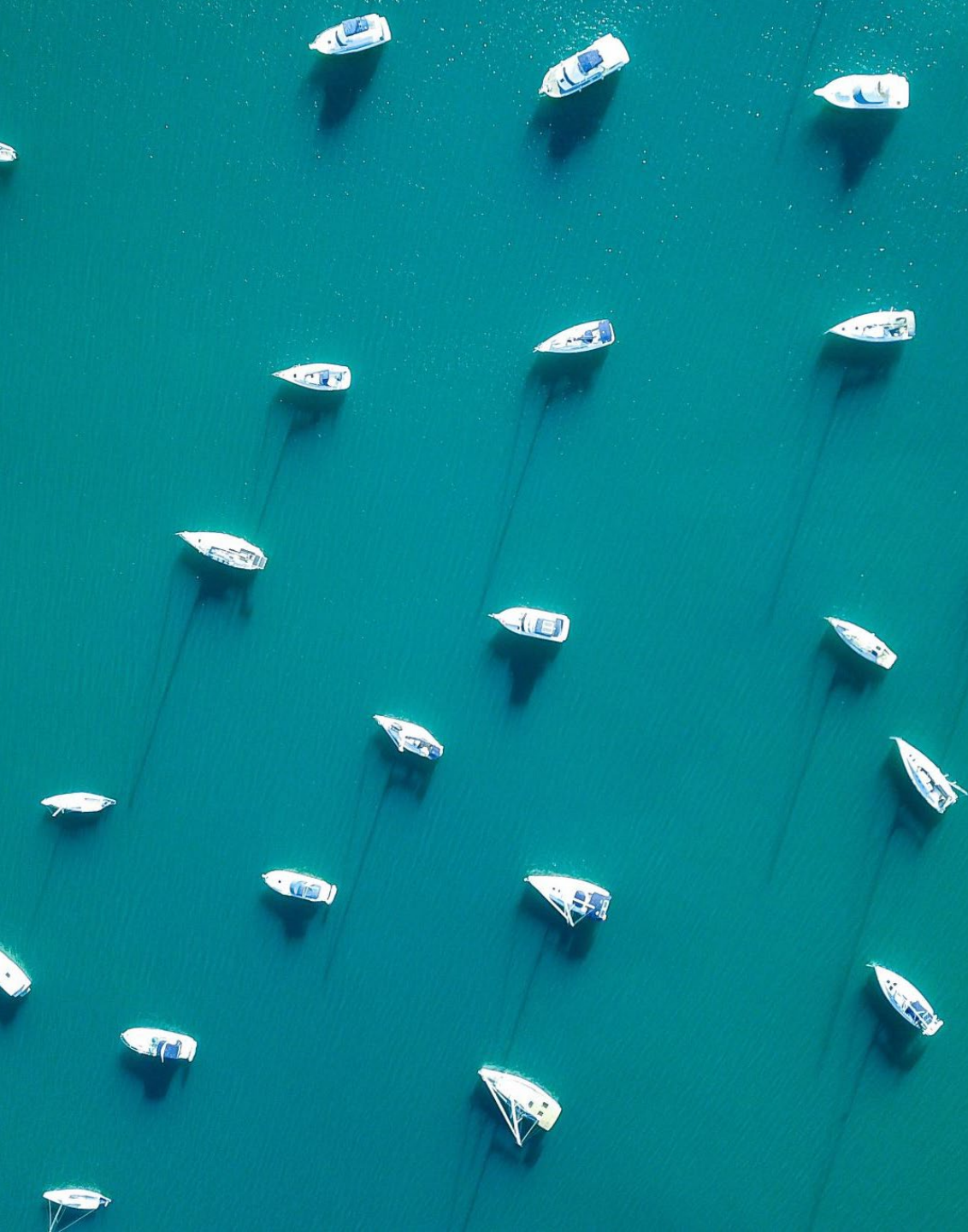
## **The Blue Economy (2023 Long Island Association report)**

- "... water related industries together account for nearly 68,000 jobs, about 5% of the region's total. If local, state and federal leaders did nothing, the blue economy would grow at a modest pace, providing a sliver of what's possible. But there's much more that can be done.
- With the right investments and attention, HR&A estimates, the blue economy could account for 127,800 jobs by 2051, as much as 8% of the region's workforce. And that growth could spread across the local economy: As people earn higher wages, spend more elsewhere and impact other industries, it could generate 195,000 jobs, \$41 billion in economic output and more than \$2.6 billion in tax revenue.
- Smaller steps also are needed, including expanding the farming of seaweed and shellfish, providing better access to the shorelines for tourism and recreation, and opening a blue economy incubator that could turn marine-related research into commercial innovation."

-Newsday Editorial 4/19/23 <https://next.newsday.com/project-update/long-island-blue-economy-updates/>



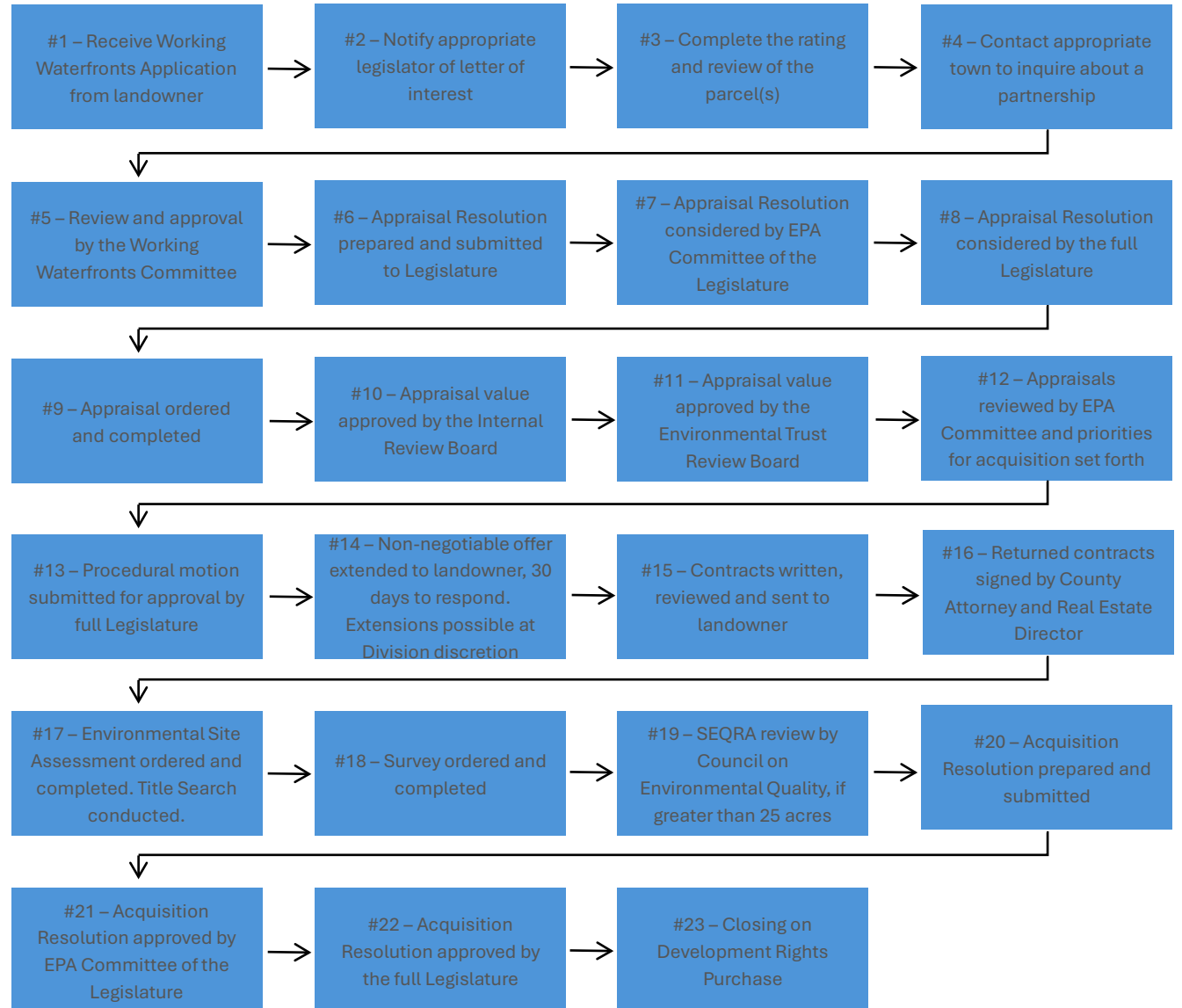




# Working Waterfront Program Highlights:

- Creates a mechanism for voluntary preservation of commercial working waterfront properties by owners of the property.
- Definitions: Aquaculture Business, Coastal Waters, Commercial Fisheries Business, Recreational Fishing or Boating Business, Working Waterfront.
- Establishes process & Committee who will have enforcement oversight.
- Conservation easements shall be perpetual.

# Acquisition Steps for Preservation



Name:  
S.C.T.M. No.:

Introductory Resolution No.



**SUFFOLK COUNTY WORKING WATERFRONTS CONSERVATION EASEMENT PROGRAM**

This rating system was developed for the evaluation of Working Waterfronts critical to Suffolk County's commercial fishing industry for potential purchase of a Conservation Easement under Chapter 26 of the Suffolk County Code. The system considers the following major factors: Economic Significance of the Property, Utility of the Property for Commercial Fisheries and Aquaculture Businesses, Alternative Properties in the Vicinity, Level of Threat of Conversion, Capacity to Maintain and Create New Shore-side Jobs. Bonuses may be given for community and municipal support, historical significance, community benefits, etc.

FACTORS		Score	Subtotal
<b>A. Economic Significance of the Property (7 pts)</b>			
1.	Highly significant because of the numbers of fishermen and vessels using (or likely to be using) the facility, because it is the only or one of a few remaining working piers in the area, is a major part of the local economy, contains important support infrastructure such as ship haul, repair and building facilities, high number of slips, large area for gear storage, and contributes to the local economy (3 pts.)		
2.	Moderately significant because of the numbers and diversity of fishermen and vessels using the facility, the relatively moderate proportion of landings in the area and for fisheries, contains limited support infrastructure such as ship haul, repair, ship building facilities, limited number of slips, small area for gear storage, is an important part of the local economy, and contributes to the local economy. (2 pts.)		
3.	Limited significance because of the relatively low numbers and diversity of fishermen and vessels using the property, the limited number of landings for the area and fisheries, limited support infrastructure, is a small part of the local economy, and makes small contributions to the local economy (1 pts.)		
4.	Capacity of the property to retain and create jobs directly related to waterfront and marina activities (4 pts.)		
<b>B. Utility of the Property for Commercial Fisheries, Aquaculture Business and Marine Repair and Support Facilities (5 pts.)</b>			
1.	The property has high utility for the uses proposed due to existing and planned improvements, its existing or planned resilience in anticipation of sea level rise, its setting in proximity to boat channels and land transportation systems, critical and supporting services in the area, and operational space. (5 pts.)		
2.	The property has medium utility for the uses proposed because of its existing and planned improvements, its setting in proximity to boat channels and land transportation system, critical and supporting services in the area, and operational space (3 pts.)		
3.	The property has limited utility for the uses proposed because of its existing and planned improvements, its setting in proximity to boat channels and land transportation system, critical and supporting services in the area, and operational space. (1 pts.)		
<b>C. Alternative Properties in the Vicinity &amp; Level of Threat of Conversion (8 pts.)</b>			
1.	The property is highly needed because it provides secure critical commercial fishing and/or marina access, and support facilities that cannot or will not be met by other properties. (4 pts.)		
2.	The property is moderately needed because it secures commercial fishing access, some support facilities and contributes to the capacity for working access in the area. (3 pts.)		
3.	Need for the property is limited because it provides a small or limited amount of secure commercial fishing access and support facilities that can be or is provided by other existing sites and facilities such as a municipal fish pier or commercial businesses. (2 pts.)		
4.	Degree of threat of conversion to uses incompatible with commercial fisheries businesses as reflected in the patterns and trends of waterfront development within the area. (4 pts.)		
<b>D. Adjustments (5 pts.)</b>			
1.	Located within a Census Designated Place with a population density of > 1,000 persons per square mile. (1 pt.)		
2.	Degree of support for the proposed project that is demonstrated by letters of support, and supporting business and/or municipal actions (LWRP or local land use plan) that will increase the significance of a project. (1 pt.)		
3.	Anticipated financial partnership with local municipality or other waterfront preservation organizations. (2 pts.)		
4.	Other positive factors. (i.e., historical significance, community benefit, etc.) (1 pt.)		
5.	Other negative factors.		
<b>TOTAL SCORE (maximum = 25 points)</b>			

# Rating Sheet

A guide to determine the viability of the property for preservation.

# Conservation Easement

---

Participation in the program is a **voluntary** agreement between Suffolk County and the owner of the Working Waterfront property.

---

The agreement protects the property with a Conservation Easement held in **perpetuity** by Suffolk County.

---

Upon execution of the Conservation Easement, **property owners will retain title** to the restricted property and receive payment for the appraised value of the rights being sold.



# PROPOSED CAPITAL PROGRAM

2026-2028

COUNTY OF SUFFOLK  
NEW YORK

EDWARD P. ROMAINE  
COUNTY EXECUTIVE

## CAPITAL BUDGET

2026

- Adopted
- CP 8745
- \$2.5M in 2026
- \$9.5M 2026-2028 Capital Program



# Questions?

- Sarah Lansdale, AICP
- Commissioner of Economic Development and Planning
- [Sarah.Lansdale@Suffolkcountyny.gov](mailto:Sarah.Lansdale@Suffolkcountyny.gov)
- 631-853-4800
- <https://www.suffolkcountyny.gov/Departments/Economic-Development-and-Planning/Planning-and-Environment/Working-Waterfront-Program>

# Working Waterfronts Panel



Amanda Jones  
Inlet Seafood



Ann Welker  
Suffolk County  
Legislator



Sarah Lansdale  
Suffolk County  
Economic  
Development and  
Planning



Eric Koepele  
LIOGA





## Digital Contact Card



**MICHAEL CIARAMELLA**  
*MSc, PhD*

Seafood Safety and Technology Specialist  
Marine District Program Lead  
mc2544@cornell.edu  
631.824.4052

[www.nyseagrant.org/seafood](http://www.nyseagrant.org/seafood)



Cornell University  
Cooperative Extension

A circular portrait of Michael Ciaramella, a man with a beard and glasses, wearing a red Sea Grant vest over a blue shirt, smiling.

## Summit Evaluation

Tell us how we did! Take our short summit evaluation by scanning the QR Code or visiting

[bit.ly/NYSSEval](https://bit.ly/NYSSEval)

